



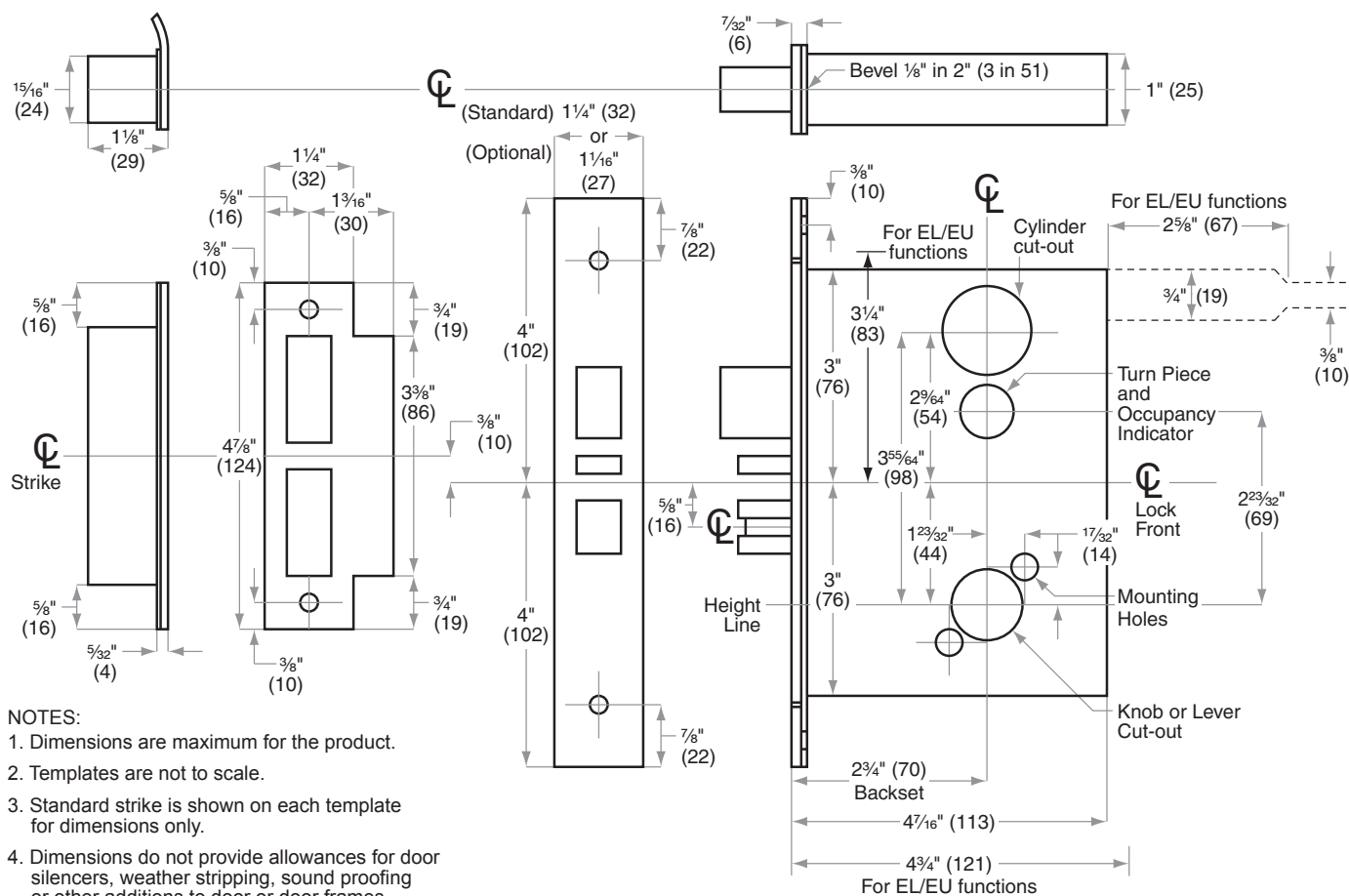
L/LV/LM/LMV-Series

Lock Case Dimensions



Case Size: $4\frac{7}{16}" \times 6\frac{1}{16}" \times 1"$ (113 mm x 154 mm x 25 mm)
 Backset: $2\frac{3}{4}"$ (70 mm)
 Door Range: $1\frac{3}{8}" - 2\frac{1}{2}"$ (35 mm–64 mm)
 Lock Front: $1\frac{1}{4}" \times 8" \times \frac{7}{32}"$ (32 mm x 203 mm x 6 mm) Standard
 $1\frac{1}{16}" \times 8" \times \frac{7}{32}"$ (27 mm x 203 mm x 6 mm)

Knob or Lever to Cylinder: $3\frac{55}{64}"$ (98 mm)
 Knob or Lever to Turn Piece: $2\frac{23}{32}"$ (69 mm)
 Height Line to Center of Deadbolt: $3\frac{1}{32}"$ (77 mm)



NOTES:

1. Dimensions are maximum for the product.
2. Templates are not to scale.
3. Standard strike is shown on each template for dimensions only.
4. Dimensions do not provide allowances for door silencers, weather stripping, sound proofing or other additions to door or door frames.

ANSI Standards: L9000-Series locks meet all requirements for installations in doors and frames prepared in accordance with ANSI specifications A156.13, 2012.

Metal Doors: Suitable reinforcement is required to support lock case in center of door and to prevent door from compressing when trim is tightened. (See ANSI A115.1)

Thick Doors: Locks for non-standard door thickness may require special instructions.

Lead Lining: When L9000-Series or L400-Series locks are ordered with lead lining, add $\frac{1}{8}"$ (3) to the width of the mortise cut-out on the lock case cover side of installation.

Electrified Locks: Provisions must be made to route low voltage wire to the lock. Power transfer unit and low voltage wiring are not furnished.

Dimensions shown in parentheses () are in millimeters.

DRAWING IS NOT TO SCALE!

Customer service: 877-671-7011

We can help you find the correct guide for your product and application!

Door preparation template

L1