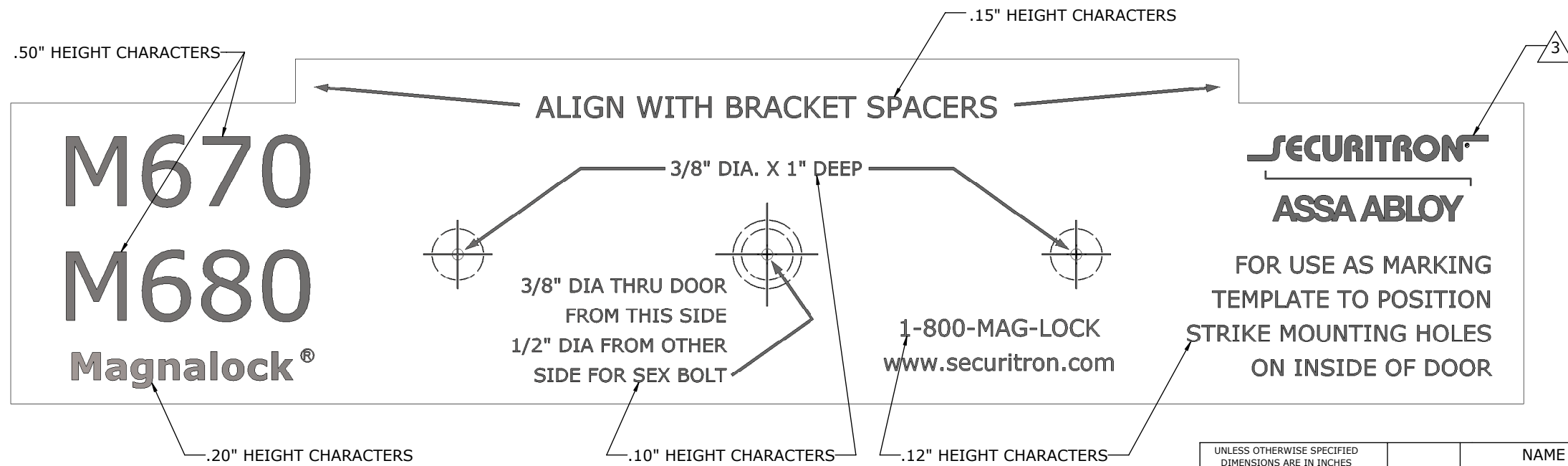
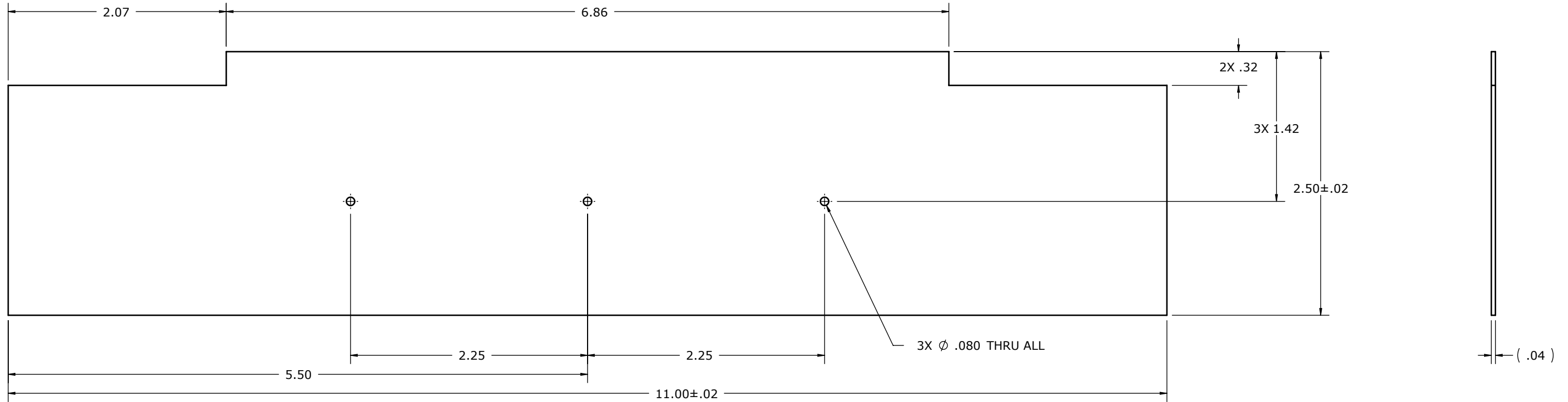


- NOTES:
1. MATERIAL: .04" THICK CLEAR POLYPROPYLENE WITH SATIN FINISH.
 2. TEXT (IN VERDANA FONT), HOLE INDICATIONS, ARROWS AND LOGO AS INDICATED IN SECONDARY VIEW ARE TO BE PRINTED IN BLACK.
 3. SECURITRON/ASSA ABLOY LOGO DEFINED BY DRAWING NUMBER 49-00052. SCALE IS CONTROLLED BY CAD SOLID MODEL PART FILE NUMBER 500-20120. CONTACT PURCHASING DEPARTMENT TO OBTAIN COPY OF FILE.

REVISIONS			
REV.	DESCRIPTION	CAR/ECO	DRAFTER
A	INITIAL RELEASE	562-12	LC



UNLESS OTHERWISE SPECIFIED DIMENSIONS ARE IN INCHES TOLERANCES ARE: FRACTIONAL ±1/32 ANGLES ±1° .XX ±.01 .XXX ±.005 BENDS ARE 90° ±1°	NAME	DATE	PHOENIX, AZ P 1-800-624-5625 F 1-623-582-4641	SECURITRON ASSA ABLOY
	DRAWN P RODGERS	2/23/11		
MATERIAL SEE NOTES	CHECKED DJ	08/23/12	TITLE STRIKE TEMPLATE M680	
	APPROVED RC	08/23/12	SIZE B	DWG NO. 500-20120
FINISH SEE NOTES	THIS DOCUMENT IS THE CONFIDENTIAL PROPERTY OF SECURITRON AND IS LOANED SUBJECT TO RETURN UPON DEMAND. TITLE TO THIS DOCUMENT IS NEVER SOLD OR TRANSFERED FOR ANY REASON. THIS DOCUMENT IS TO BE USED ONLY PURSUANT TO WRITTEN LICENSE OR WRITTEN INSTRUCTIONS OF SECURITRON.		REV. A	SHEET 1 OF 1
DO NOT SCALE DRAWING INTERPRET PER ASME Y14.5M-1994	ALL RIGHTS TO DESIGN AND INVENTIONS ARE RESERVED BY SECURITRON, POSSESSION OF THE DOCUMENT IS ACCEPTED SUBJECT TO THE FOREGOING. © SECURITRON 2012		ASSA ABLOY, the global leader in door opening solutions	